



“Lighting The World’s Footfall”

No other company combines over 21 years of illuminated handrail manufacture

Handrail lighting assembled and designed in one modern factory working with the latest machinery and CAD programmes to ensure the best price with the best quality, backed by the complete range of independent laboratory testing.

Our eco-friendly LED lights and handrails are an integral unit with installations throughout the UK and Europe on major infrastructure, commercial and private projects.



Footfall Lighting Limited
Units 4, 5 & 6 Roughmoor Enterprise Centre Williton,
Somerset TA4 4AT
T: 07500 336861 | E: linda@footfalllighting.co.uk





21 Years of Bespoke
Illuminated Handrails |
Design | Manufacture
& Installation

Contents

Customer Service	6
What We Do For You	8
Products	10
Lux Table	12
Materials & Finishes	14
Special Products For The Rail Industry	18
Case Studies	20

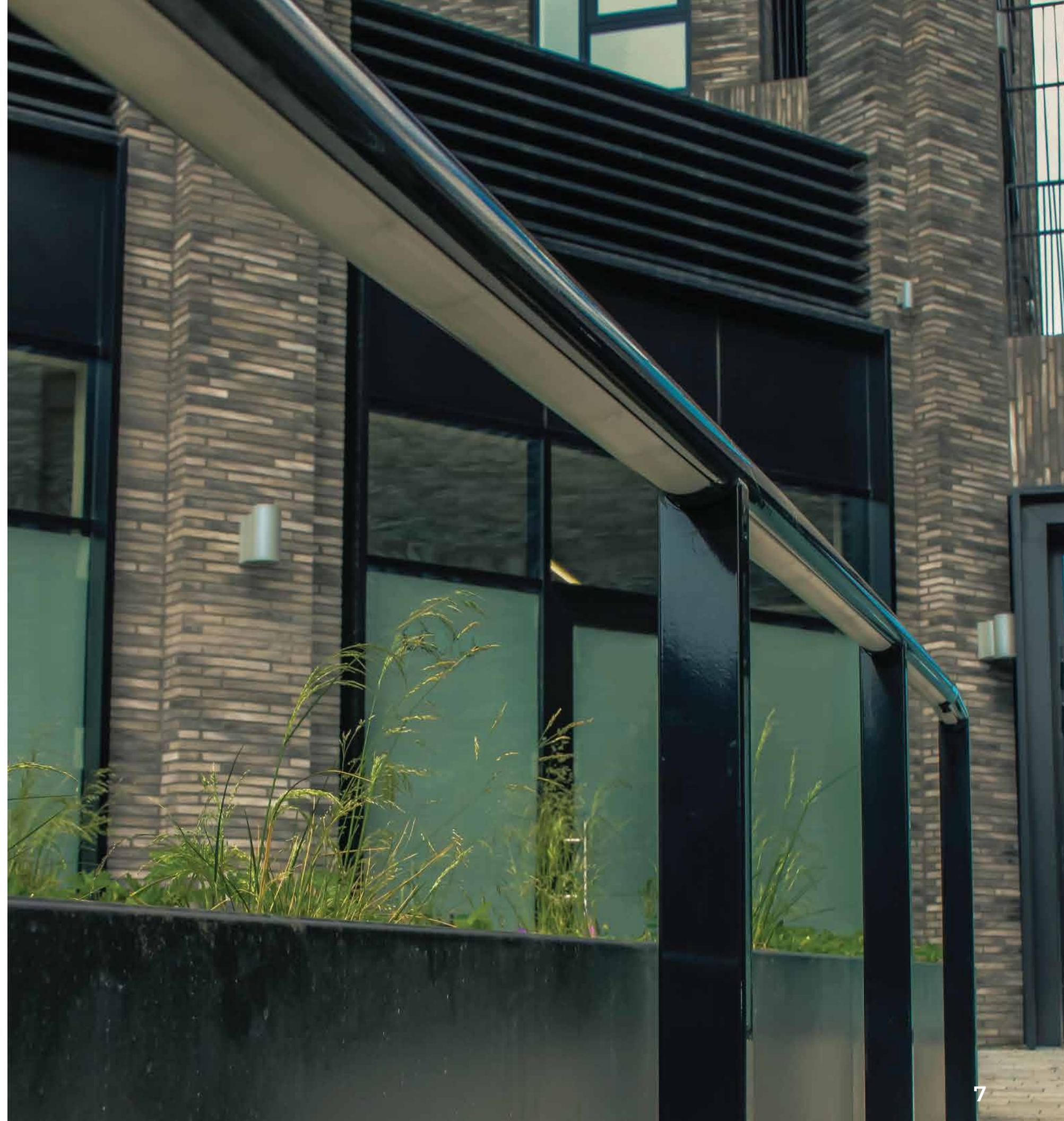
Unparalleled Service,
Quality & Price

Customer Service

Respond | Replace | Repair

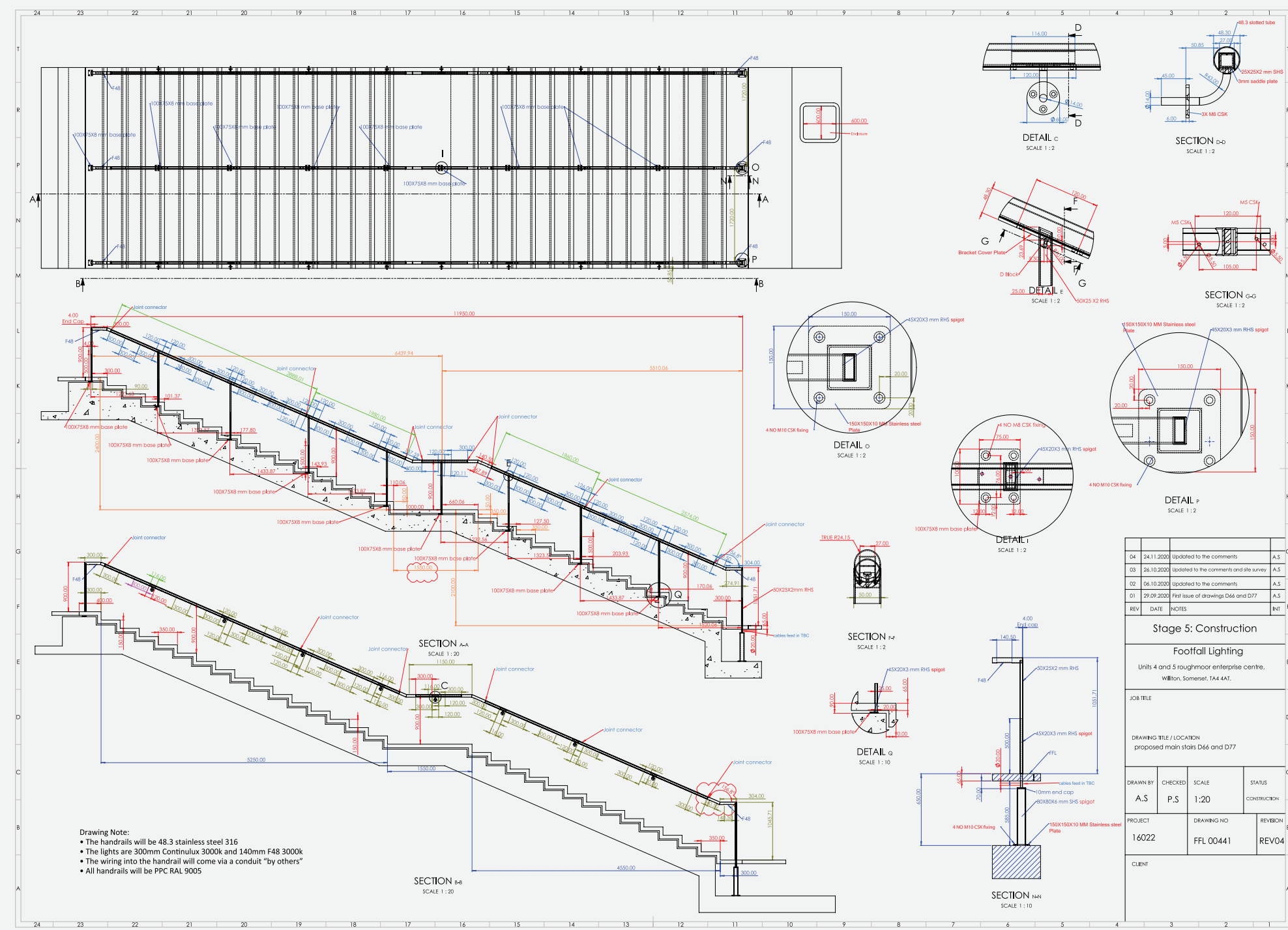
Our LED luminaires and our bespoke handrails are from one site and we will respond, replace and repair any of our products immediately. All luminaire housings are in stock and our highly skilled operatives will immediately replace damaged handrails.

We are electrical and mechanical engineers, able to guide you through any technical problems on site.



What We Do For You

- A to Z solution from Concept to Completion
- Site survey using EDM measuring systems for perfect accuracy
- Layout drawings with photometric visualisation
- Fabrication drawings for your O&M Manuals and to suit our CNC Machining Programmes for zero tolerance accuracy
- Production control and inspection, all to UKAS ISO 9001-2015
- Packaging and labelling to eliminate product damage in transit and site confusion
- Installation and commissioning by our engineers
- Complete project management



REV	DATE	NOTES	INT
04	24.11.2020	Updated to the comments	A.S.
03	26.10.2020	Updated to the comments and site survey	A.S.
02	06.10.2020	Updated to the comments	A.S.
01	29.09.2020	First issue of drawings D66 and D77	A.S.
Stage 5: Construction			
Footfall Lighting			
Units 4 and 5 roughmoor enterprise centre, Williton, Somerset, TA4 4AT.			
JOB TITLE			
DRAWING TITLE / LOCATION			
proposed main stairs D66 and D77			
DRAWN BY	CHECKED	SCALE	STATUS
A.S.	P.S.	1:20	CONSTRUCTION
PROJECT	DRAWING NO	REVISION	
16022	FFL 00441	REV04	
CLIENT			

Products

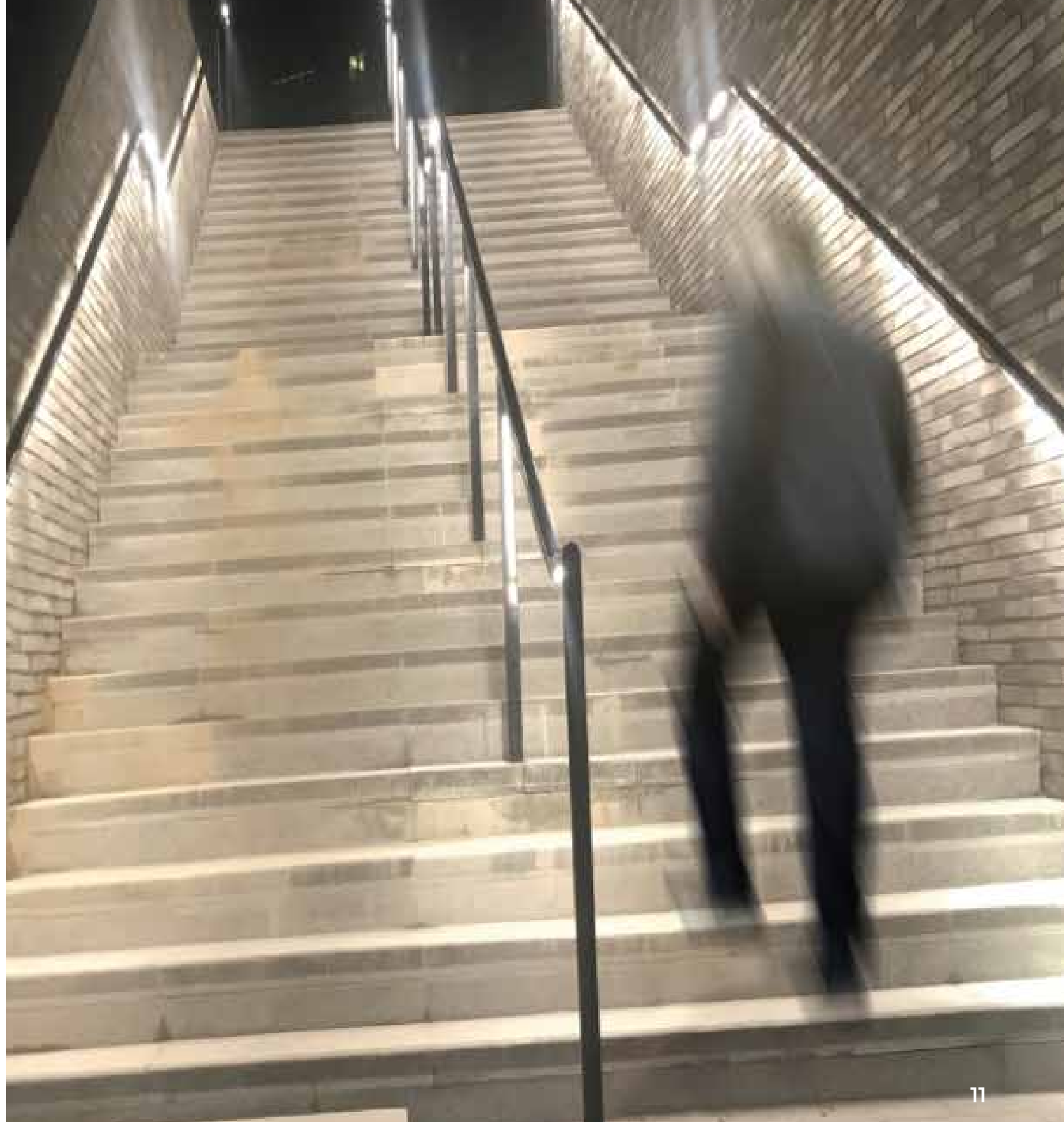
**IP67 | IK10 | EMC | PHOTO-BIOLOGICAL |
GLOW WIRE | GENERAL SAFETY |
TESTED BY THE LIA LABORATORIES**

Handrail luminaires use the handrail as its housing and is tested as a complete unit with all cable connections included. Unless this complete process is carried out and offered as a unit with all independent test certifications, the customer may be at risk.

Quality is assured by investment in the latest machining technology, backed by highly skilled operatives.

We offer a range of product solutions each with its own LED options to ensure we meet your lumens requirement and control interfaces.

If it can be drawn, it can be made.





Lux Table Information

Continulux®

	1.5m wide path		2m wide path	
	Ave (Lux)	Uo	Ave (Lux)	Uo
1m Pitch	339	36%	275	25%
1.5m Pitch	226	36%	183	25%
2m Pitch	170	34%	138	25%
2.5m Pitch	140	30%	113	23%
3m Pitch	118	25%	96	21%

Our continuous LED handrail lighting solution.

Beautifully designed and engineered with symmetric or asymmetric light flow options.

F48 Modula

	1.5m wide path		2m wide path	
	Ave (Lux)	Uo	Ave (Lux)	Uo
0.5m Pitch	261	29%	206	16%
1m Pitch	130	30%	103	17%
1.5m Pitch	87	29%	68	17%
2m Pitch	65	28%	52	16%
2.5m Pitch	54	23%	43	15%
3m Pitch	46	19%	36	13%

F48 Modula

21 years of trouble free installation across the UK and Europe with constant upgrading to keep pace with the latest in LED technology.

140mm with symmetric and asymmetric options.

F300 Modula

	1.5m wide path		2m wide path	
	Ave (Lux)	Uo	Ave (Lux)	Uo
0.5m Pitch	387	41%	312	22%
1m Pitch	193	41%	156	22%
1.5m Pitch	129	41%	104	22%
2m Pitch	97	40%	78	22%
2.5m Pitch	80	33%	64	20%
3m Pitch	67	27%	54	17%

F300 Modula

PCB board using high powered Cree LED's for unrivalled performance. As with all our lights this luminaire has its dedicated emergency LEDs to ensure the highest safety standards are met.

300mm with asymmetric or symmetric options

Spot Modula

	1.5m wide path		2m wide path	
	Ave (Lux)	Uo	Ave (Lux)	Uo
0.5m Pitch	59	17%	45	6%
1m Pitch	29.6	16%	22.7	6%
1.5m Pitch	19.5	16%	13.8	6%
2m Pitch	14.8	13%	11.4	6%
2.5m Pitch	12.5	10%	9.6	5%
3m Pitch	10.5	8%	8	5%

Spot Modula

Our 28mm Diameter Spot luminaire fits perfectly to the rail contour for vandal resistant elegance. It has high performance combined with excellent thermal management.

Asymmetric and symmetric options

No tilt has been included - but is possible to increase Uo levels.
All fittings mounted 1m from floor level.
All fittings spaced equally.



For further information contact John Haynes - Technical Director on 07703 611882
© 2021 Footfall Lighting Ltd. All rights reserved.



Unit 4/5 Roughmoor Enterprise Centre, Williton, Taunton, England, TA4 4AT



Materials & Finishes

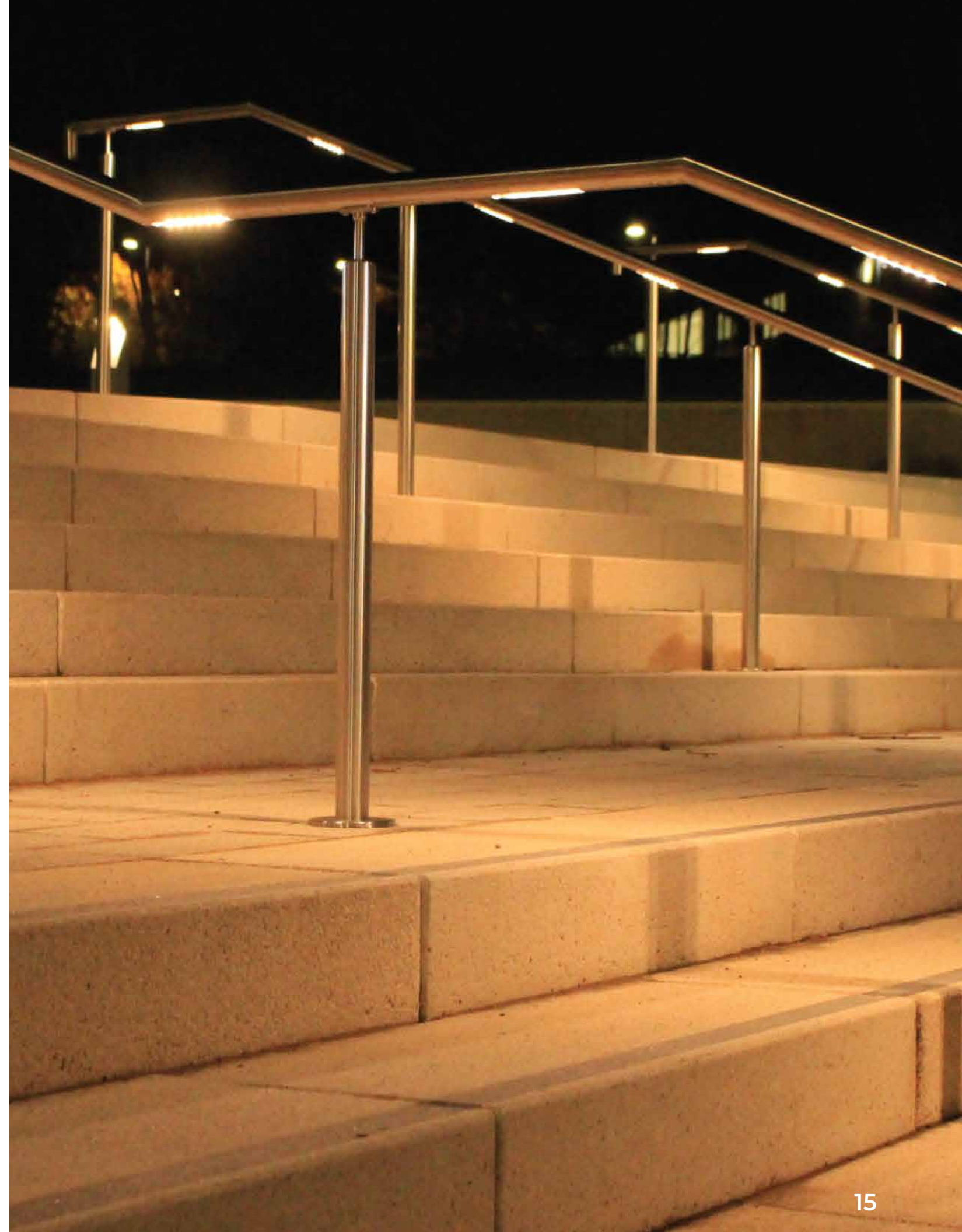
All materials come with their certificates of conformity and full traceability

Handrails in stainless steel to ensure consistency of strength and no deleterious chemical reaction. Our handrails can be finished with numerous levels of polishing, as well as shot peening and warm to touch coatings.

Our machinery ensures exact surface finishing. We have fully automated inline polishing as well as the best quality hand tools for tight spots. Our British manufactured CNC Mandrel Bender ensures a wrinkle-free finish for returns, ramps and bends. CNC inline drilling and Laser Profiling.

For our polycarbonate injection mouldings, we select only the finest granules and use the very latest high-pressure injection moulding machines.

Our UK tool maker is world-class. Working from our solid work CAD Designs.



Bespoke Finishes

Stainless Steel

All our handrails are manufactured using corrosion resistant, premium grade 316 stainless steel, ensuring ultimate durability and excellent quality



Colour

Choose from a variety of PPC warm to touch coatings and colours to suit your project



Special Products For The Rail Industry

ANTI CLIMB RAIL

A perfect directional light with no distractive light overspill



RAIL TRACK LIGHT

Ideal for maintenance areas where high visibility and safety are required



GRP ILLUMINATED HANDRAIL

Using our F48 or F300 LED Modula Lighting



Camley Street - London

"A totally unique bespoke LED handrail system using our Continulux inline modules within a 316 marine grade stainless steel handrail. Nestled onto the laser scalloped profiles fixed to a slimline rectangular post. All finishes in a double PPC coat of high gloss black. Each post is internally sleeved with a solid steel spigot for enormous strength."



Wembley
Park

Wembley Park – London

"Adjacent to the famous stadium, our illuminated handrail barriers are finished in satin polish stainless steel with our tried, tested, and certified F48 modules manufactured and tested in our Somerset factory working to UKAS ISO 9001-2015 quality standard. We add safety to high-density footfall."



Limehouse Station – London

"A busy London station is the perfect platform for our twenty years tried and tested F48 illuminated handrail. Highly vandal resistant and finished in tough warm to touch PPC, there is minimum light overspill and no pollution. The installation incorporates our three-hour addressable emergency option with its independent batteries and drivers. All designed, manufactured, installed, and commissioned by Footfall Lighting."



Marlborough College

"At the campus centre of this famous school, our illuminated handrail system incorporates posts with straight and curved handrails to give a dramatic lighting experience without waste on pollution. With over twenty years' experience in school and university handrail lighting, we are very much aware of vandal resistant solutions. We used our F48 modules throughout, including the illuminated alumni plaque."



Sock Island Bridge – Leicester

"Using our F48 modules within a warm to touch coated handrail, we achieved a perfect asymmetric light throw with no overspill onto the water surface. No wasted illuminance, no pollution. Footfall's solution."