

## Footfall Anti-Climb Light

### Features

- Grade 304 or 316 stainless steel
- Powder coated to any RAL or stainless steel satin finish
- Vandal resistant tamper proof screws
- Simple installation and maintenance
- Multiple fixing possibilities
- Dimmable, On/Off or Dali lighting controls
- 3hr battery back up available
- Suits both F48 and F300 LED modules
- Angled design to prevent a foot or hand hold
- 5 year Warranty

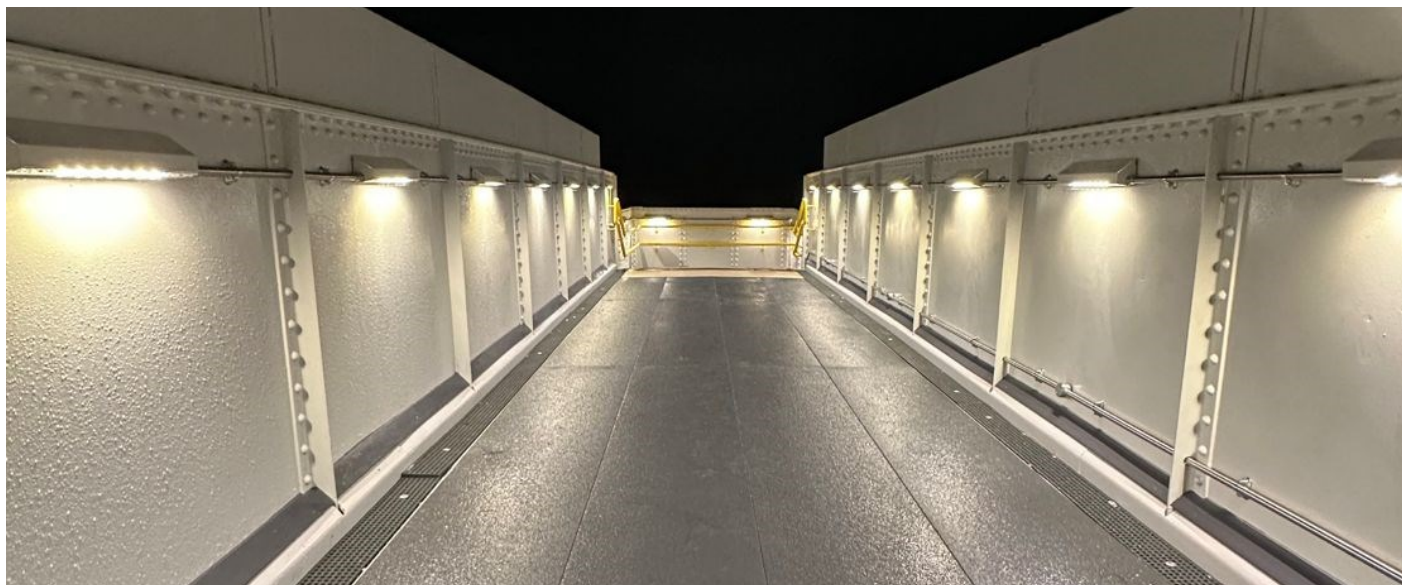


*Upminster Railway Station, London*

### Description

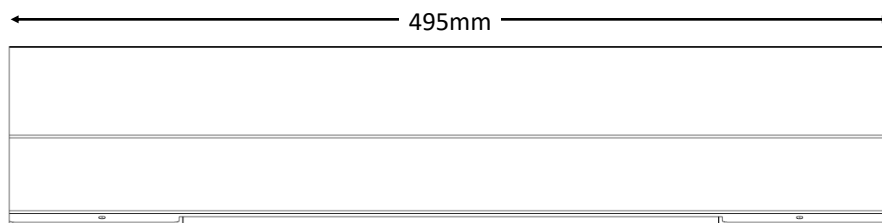
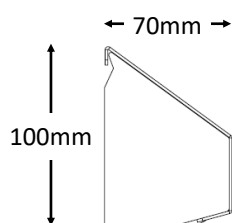
The Footfall Anti-Climb Light is an extremely versatile, stand alone unit. Designed to prevent foot or hand hold in dangerous or sensitive public areas. The stainless steel light can be manufactured in 3 different lengths depending upon application. The light can house our F48 or F300 LED modules, the F300 being the most popular. The units come in 2 pieces, the main housing is fixed to the structure and the cover is secured into position using stainless steel tamper proof screws. It can be customized to be fixed to virtually any structure including palisade fencing. Cable holes can be variable. Widely used on station footbridges, it has a sleek and simple design to complement any bridge or structure.





Upminster Railway Station, London

## Typical Dimensions



Based on the Footfall 495 Anti-Climb Unit

Anti-Climb Light	Length	QTY of LED Modules
Footfall 495 Anti-Climb Light	495mm	1 per unit
Footfall 1500 Anti-Climb Light	1500mm	2 or 3 per unit
Footfall In-line Anti-Climb Light	Made to length in sections	1 to 3 per section

## Typical Lumen per unit

Anti-Climb Light	LED Module	QTY of LED Modules	Total Lumens
Footfall 495 Anti-Climb Light	F48	1 per unit	320
Footfall 495 Anti-Climb Light	F300	1 per unit	669
Footfall In-line/1500 Anti-Climb Light	F48	2 per unit	640
Footfall In-line/1500 Anti-Climb Light	F300	2 per unit	1,338
Footfall In-line/1500 Anti-Climb Light	F48	3 per unit	960