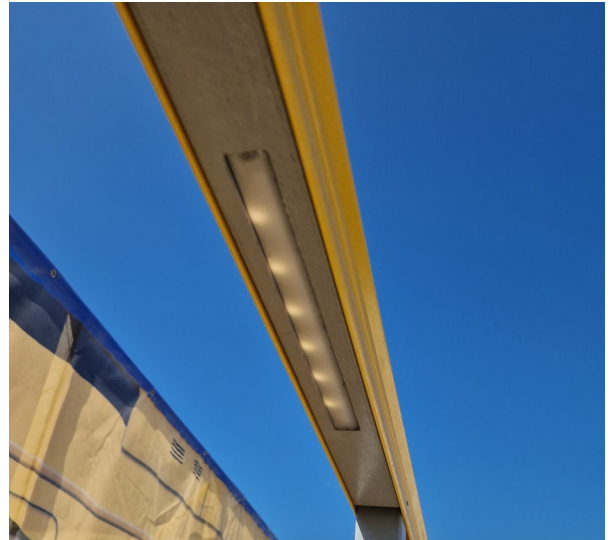


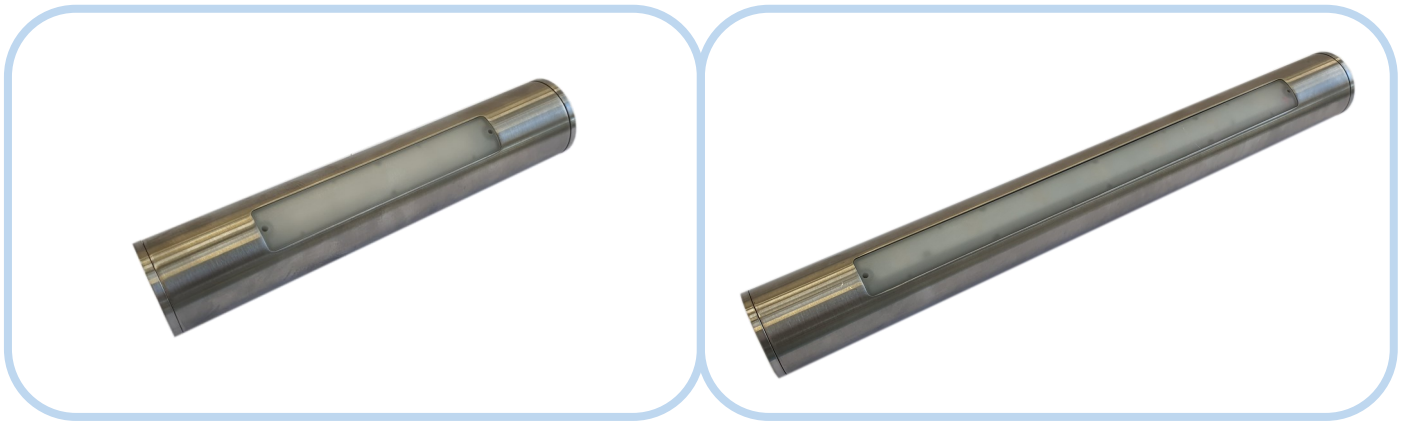
Footfall GRP Handrail Lighting

Features

- LEDs fit into either 50mm GRP SHS or CHS
- Multiple LED module options - F48 & F300 (see pg2 for lighting details)
- Vandal resistant tamper proof screws
- Simple installation and maintenance
- Dimmable, On/Off or Dali lighting controls
- 3hr emergency battery back up available
- Both Modules have either an asymmetric or symmetric light distribution
- Solar powered systems available upon request
- Lux levels adjustable to reach any requirements
- 5 year Warranty on LED modules



Lighting Specs



F48 LED Module

F300 LED Module

140.0mm x 22.0mm	Module Dimensions	300mm x 22.0mm
5 Watt with Emergency 0.29W	High Output + Emergency PCB	8 Watt with Emergency 0.29W
Stabilised 24V DC \pm 5%	Operation Voltage	Stabilised 24V DC \pm 5%
2700k, 3000k, 4000k	Colour Temperature	2700k, 3000k, 4000k
86	CRI (Color rendering index)	85
Polycarbonate / Lumaax® & Antimicrobial	Material	Polycarbonate / Lumaax® & Antimicrobial
Mechanical Fixing. M3 Bolts (Stainless Steel 316)	Fixings	Mechanical Fixing. M3 Bolts (Stainless Steel 316)
30 + per driver	Maximum Module Qty.	27 + per driver
430	Luminaire Lumens (Clear Lens)	710
86	Lumens per Circuit Watt	89
108	Emergency Circuit Luminaire Lumens	108
13.5	Emergency Circuit Lumens per Circuit Watt	13.5
Dimmable, On/Off or Dali lighting controls	Control Options	Dimmable, On/Off or Dali lighting controls
Emergency Feature / 3hr Battery Backup	Additional Options	Emergency Feature / 3hr Battery Backup
British Made, CE Marking, Full Traceability, IP66, IK10	Quality	British Made, CE Marking, Full Traceability, IP66, IK10

